



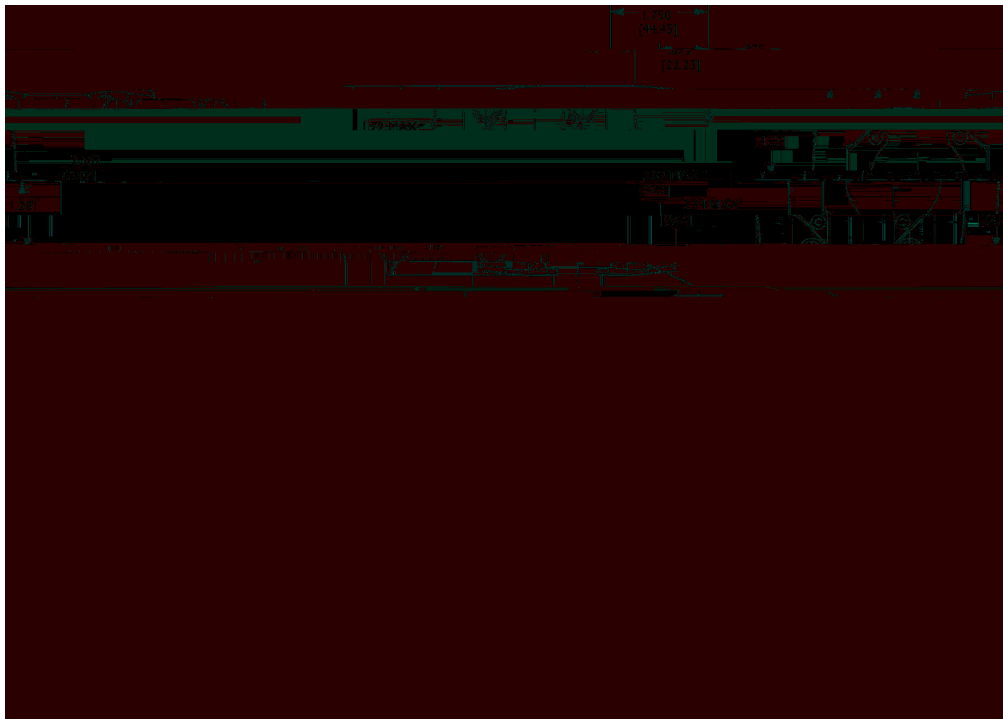
M

**760K Series Installation and
Operation Instruction**



Potential Trouble

Table 1. Replacement Parts



1 Valve Weight:

2 Polarity:

3 Manifold O-Rings

4 Surface:

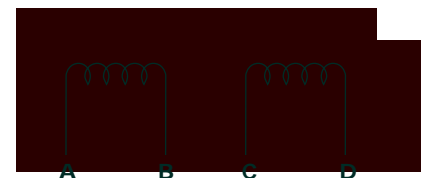
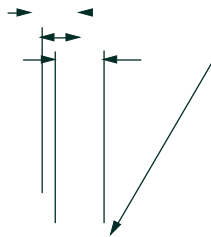
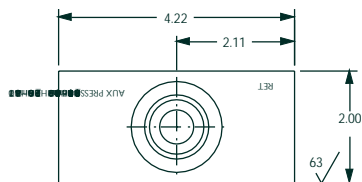


5 Electrical Connector:

6 Null Adjust:

7 Compressed Oil Volume

8 Suggested Mounting Screws:



The products described herein are subject to change at any time without notice, including, but not limited to, product features, specifications, and designs.

MOOG
Industrial Controls Division

TW, Rev. E, July 2024, CDS7155