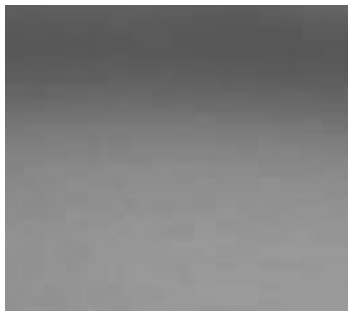




, 0



. E , I ,

F

E

-
- - -
. C

D

10

F

6

4

3

B7.5 (☒) 1.6 (7.5 (3-3.1.1 () -7 () -7 () -11.4 () -8

F GA

F I :
2228 G ,G A 85233
(602) 572-2623 @ . . .

D @ DG @ DG @ DG